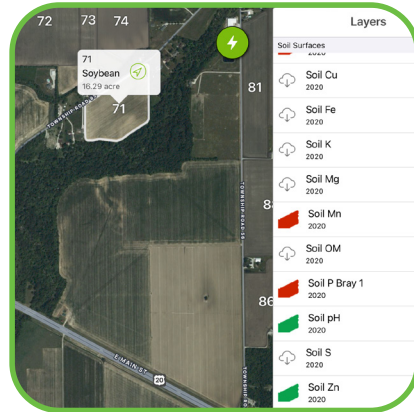


GET TO KNOW AGWORLD AND HOW IT CAN BENEFIT YOU!

When you come to one of our agronomic professionals the first thing that they will do for you, is complete a customized profile report of your field using our customizable ag software.



- By having detailed information in our software, and knowing your fields personally through our soil sampling procedures, we will be able to develop a product plan to meet your needs.

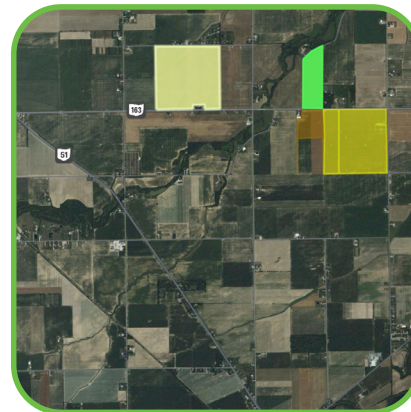
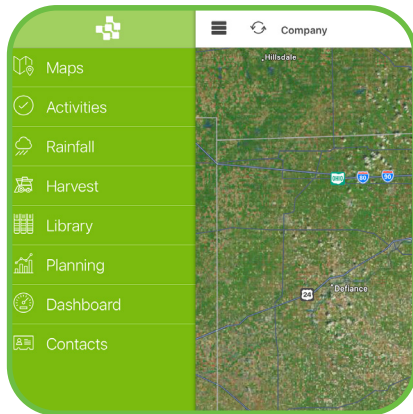
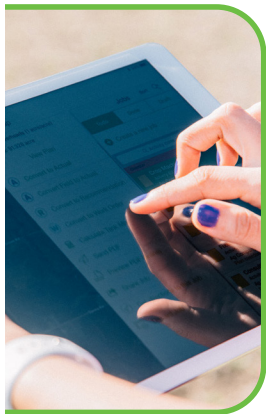
- As a part of our services with Agworld we will develop and maintain soil sampling of your fields.

- What is unique about Agworld is that you will be able to have your own account and password, allowing you to see what your salesman sees in real time.

- Record keeping is a breeze. You will be able to upload your self-applied product applications through paper, phone, e-mail or text.

- Because we offer custom services, we will create a specific plan that will fit your needs.

- You will be contacted every step of the way by one of our sales professionals.



Agworld is the world's first Collaborative Farming Solution that **enables growers, crop consultants, farm staff, precision specialists and operation managers to truly work as one.** Agworld's document management, data capture tools, farm maps, library of labels and communication tools improve work flow and increase production efficiency all in one easy-to-use, cloud-based platform.



DRY - COVER CROP

Activity 3582955
Actual completed on Oct 25, 2022

Anstead: 34
Muriate of Potash 0-0-60 (3350 lbs (fixed)), Pro-pell-it Pelletized Gypsum (10050 lbs (fixed)), Rye - Cereal Rye NVS (1675 lbs (fixed)), Fertilizer Application (1 acre/acre)
Total Area: 34.99 acre

[View Actual](#)

[Calculate Tank Mix](#)

[Send...](#)

31,32

34
Cereal Rye NVS
34.17 acre

34

CONTACT OUR SPECIALISTS

Allison Bench - Bradner Branch
(419) 360-4244
abench@luckeyfarmers.com

Brad Betschman - Bradner Branch
(419) 677-1666
bbetschman@luckeyfarmers.com

Luke Carper - Plymouth Branch
(419) 706-5976
lcarper@luckeyfarmers.com

David Fierbaugh - Plymouth Branch
(419) 769-9111
dfierbaugh@luckeyfarmers.com

Brice Gahler - Graytown Branch
(419) 552-0169
bgahler@luckeyfarmers.com

Joel Henning - Ida Branch
(734) 790-4251
jhenning@luckeyfarmers.com

Josh Kieffer - Bradner Branch
(419) 341-8870
jkieffer@luckeyfarmers.com

Bill Kuhlman - Bradner Branch
(419) 261-4511
bkuhlman@luckeyfarmers.com

Alec Miller - Plymouth Branch
(419) 569-4799
amiller@luckeyfarmers.com

Holly Murray - Bascom Branch
(419) 345-6126
hmurray@luckeyfarmers.com

Sam Rapp - Bradner/Tontogany Branches
(419) 460-5411
srapp@luckeyfarmers.com

Ashley Schulz - Graytown Branch
(419) 280-1866
aschulz@luckeyfarmers.com

Derek Sweeting - Plymouth Branch
(419) 806-7079
dsweeting@luckeyfarmers.com



LUCKEY FARMERS, INC.



CUSTOMIZED PRODUCT SOLUTIONS WITH

